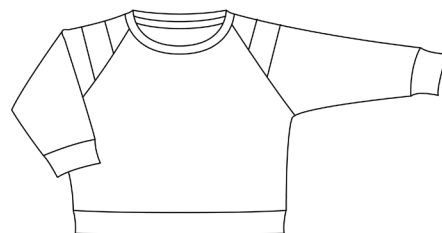
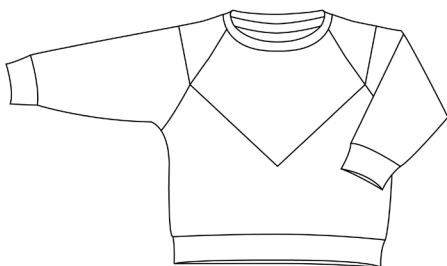
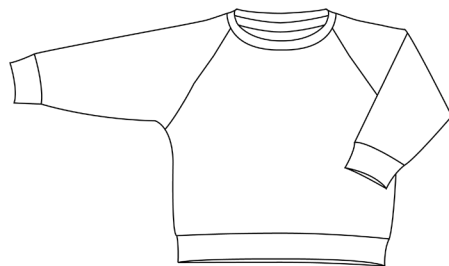




Sizes
80 - 158



Questions or problems?
Feel free to contact me:
Email: info@beletoile.com

Thanks for downloading this sewing pattern!

I would like to point out that all content of this pattern is copyright protected.
It is therefore not allowed to share the PDF file or printed copies of the pattern with others.

The files cannot be shared in facebook groups.

This pattern is only intended for personal use.

Any reproduction or resale of this pattern is forbidden by law.

It is allowed to make copies for personal use.

It is allowed to use that pattern for selling *finished items in small quantities*, after written permission by the designer and by indicating the name of the pattern and the link to the website.

Would you like to give a *workshop* with the pattern?

Contact me for the conditions.

Happy sewing!
Isabel



Printing instructions

You can print the pattern yourself at home on A4 or letter paper.

- download the pattern, save and close the file

- Open the file from where you saved it.

- check the box 'actual/real size'

- check the box 'auto' at the print position

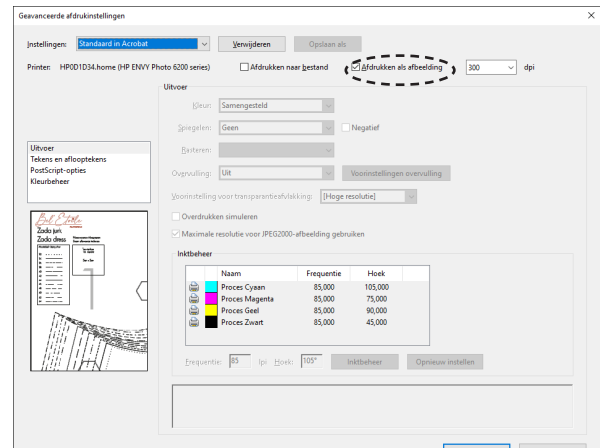
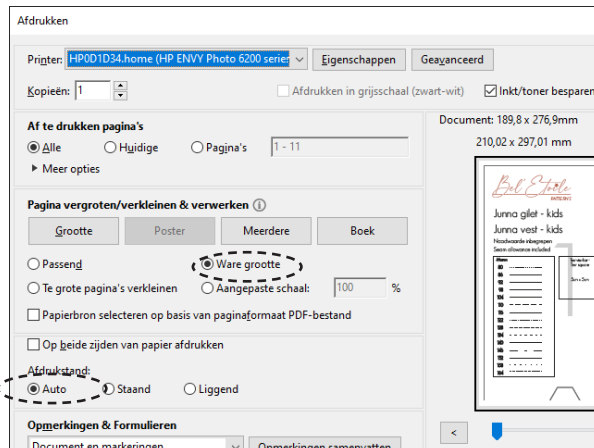
Check the 5x5cm test square on the first page of the pattern before printing everything.

Attention:

Do you own an HP printer?

Go to advanced settings and choose 'print as image'

This will prevent shifting, distorted lines and print your pieces correctly.

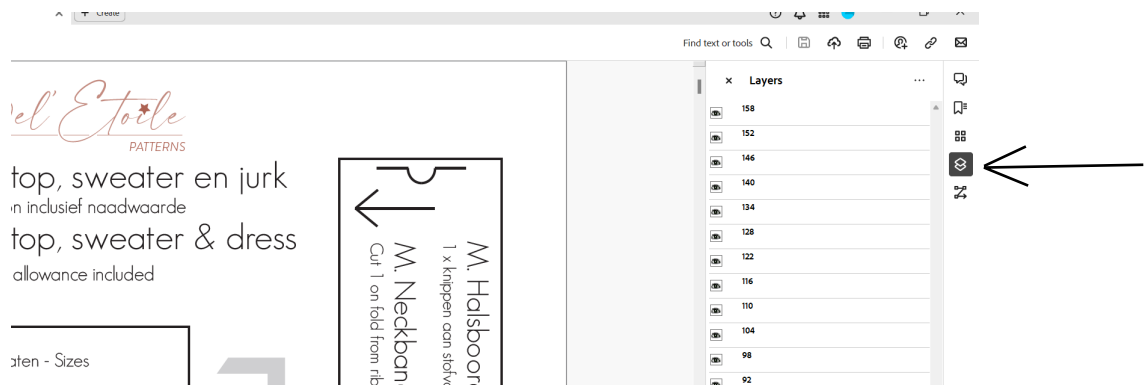


Printing only your own size or your favorite options? You can!

To do so, open the pattern in Adobe Acrobat PDF reader and click on the "layers" icon.

Uncheck all the layers you don't need, except the bottom layer, which contains all the text and marks.

In the table on page 6 you can find which pages to print for which size and/or version.



Two A0 size files of the pattern are included for copyshop printing.

One is paper saving and has overlapping pieces, the other one has no overlaps.

Projector file

A projector file is included in the pattern.

Layers:

- patternpieces/size
- calibration layer
- grid layer 10 x 10cm

We include thick solid lines for extra visibility, large font, lots of space around the pattern pieces, mirrored pieces (when necessary) and full pattern pieces with indicated foldline.

About ISA

Isa is a super versatile pattern for all kids.

You can vary from a simple sweaterdress to a dress with gathered skirt, colorblock in the front and/or sleeves and pockets on the skirt.

Make a trendy sweater or crop top to be totally on trend, there's something for everyone.

The fit is loose but not oversized.

In this tutorial you will find step-by-step drawings that will seamlessly help you assemble your handmade masterpiece.

Useful charts

Size chart

THE NUMBERS TELL THE TALE!

Measure carefully before determining which size to make.

There can be differences between ready to wear sizes and sewing pattern sizes.

The chest circumference is the determining size, use that measurement as a starting point.

Between 2 sizes?
Go for the bigger one.

Size	80	86	92	98	104	110	116	122	128	134	140	146	152	158
Height	80	86	92	98	104	110	116	122	128	134	140	146	152	158
Chest	50	52	54	55	57	59	61	63	66	69	72	75	78	81

Measurements finished pieces

This table offers an overview of how much ease is added to each size and the length of each garment.

You can compare these measurements to a well fitting garment and make adaptations if necessary.

Size	80	86	92	98	104	110	116	122	128	134	140	146	152	158
Chest circumf top/sweater/dress	58	60	62,5	65	67,5	70,5	73	76	78,5	81	84	87,5	91	95
Length crop top*	25,5	27	28	29,5	30,5	31,5	33	34	35,5	37	38	39,5	41	42,5
Length sweater*	32,5	34,5	36,5	38,5	40,5	42	44	46	48	50	52	54	56	58
Length dress*	44	47	51	55	57	61	65	69,5	73,5	76	78,5	82,5	87	91

* measured from back neck to hem

Recommended fabrics

The lsa top/dress pattern requires stretch fabrics, like french terry, sweater knit, jersey and punta di roma.

For the cuffs, neckband and waistband we recommend ribbing.

If you want to use your main fabrics for this, add 2-3cm to the width of the bands/cuffs.

Required amount of fabric and notions

The amount of fabric is calculated for a fabric width of 140cm.

Is your fabric narrower? Then keep in mind that you will need more fabric.

Is your fabric wider? Chances are you will need less fabric.

				80	86	92	98	104	110	116	122	128	134	140	146	152	158
No colorblock	Crop top	Short sleeve		50	50	50	55	60	65	65	70	75	75	80	80	85	85
		Long sleeve		60	70	75	80	80	80	85	90	95	100	100	105	110	110
	Sweater	Short sleeve		50	50	50	55	60	70	75	80	85	85	90	90	100	100
		Long sleeve		65	70	75	80	85	90	95	100	105	110	110	115	120	125
	Sweaterdress	Short sleeve		50	50	50	55	60	90	100	105	110	110	115	120	125	130
		Long sleeve		70	70	80	85	90	110	115	120	130	135	140	145	150	160
	Dress with gathered skirt	Short sleeve		75	80	85	80	130	140	150	155	160	170	175	180	190	200
		Long sleeve		85	90	95	95	130	140	150	155	160	170	175	180	190	200
Color-block	Crop top		Color 1	20	20	20	20	20	20	25	25	25	25	25	30	30	30
			Color 2	20	20	20	25	25	25	25	25	25	25	25	30	30	30
		Short sleeve	Color 3	35	40	40	40	50	55	55	60	60	65	65	70	70	70
		Long sleeve	Color 3	45	50	50	50	65	70	75	80	80	85	90	95	100	100
	Sweater		Color 1	20	20	20	20	20	20	25	25	25	25	25	30	30	30
			Color 2	20	20	20	25	25	25	25	25	25	25	25	30	30	30
		Short sleeve	Color 3	40	45	45	50	60	60	65	70	70	75	75	80	85	85
		Long sleeve	Color 3	50	55	55	60	75	80	85	90	90	95	100	105	110	110
	Sweaterdress		Color 1	20	20	20	20	20	20	25	25	25	25	25	30	30	30
			Color 2	20	20	20	25	25	25	25	25	25	25	25	30	30	30
		Short sleeve	Color 3	50	55	60	65	80	80	90	90	95	100	100	110	115	120
		Long sleeve	Color 3	60	65	70	75	90	100	110	110	115	120	125	130	140	145
	Dress with gathered skirt		Color 1	20	20	20	20	20	20	25	25	25	25	25	30	30	30
			Color 2	20	20	20	25	25	25	25	25	25	25	25	30	30	30
		Short sleeve	Color 3	60	60	70	75	120	130	140	145	150	160	165	170	180	190
		Long sleeve	Color 3	70	75	80	85	120	130	140	145	150	160	165	170	180	190
Ribbing				30	30	30	30	30	30	30	30	30	30	30	30	30	30

Seam allowance

Seam allowance is included in all pattern pieces.

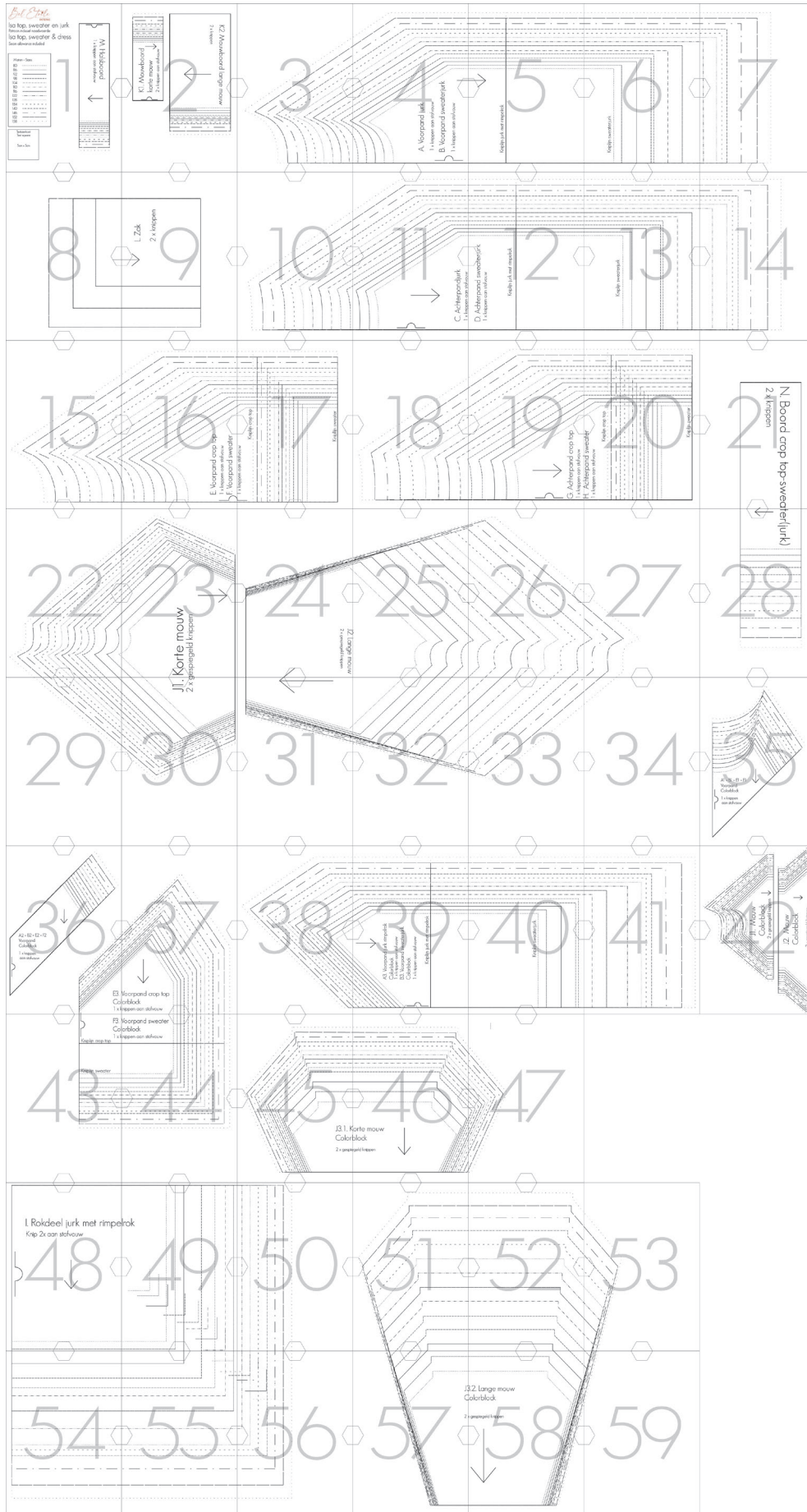
0cm at the fold and 1cm around.

We added 3cm hem allowance at the gathered skirt.

Pages to print - all sizes

Size		80	86	92	98	104	110	116	122	128	134	140	146	152	158
Colorblock	Croptop & sweater: front & back	19-20, 35-37, 43-44	19-20, 35-37, 43-44	19-20, 35-37, 43-44	19-20, 35-37, 43-44	18-20, 35-37, 43-44	18-20, 35-37, 43-44	18-20, 35-37, 43-44	18-20, 35-37, 43-44	18-20, 35-37, 43-44	18-20, 35-37, 43-44	18-20, 35-37, 43-44	18-20, 35-37, 43-44	18-20, 35-37, 43-44	18-20, 35-37, 43-44
	Dress with gathered skirt: front & back	11-12, 35-36, 38-39	11-12, 35-36, 38-39	11-12, 35-36, 38-39	10-12, 35-36, 38-39	10-12, 35-36, 38-39	10-12, 35-36, 38-39	10-12, 35-36, 38-39	10-12, 35-36, 38-39	10-12, 35-36, 38-39	10-12, 35-36, 38-39	10-12, 35-36, 38-39	10-12, 35-36, 38-39	10-12, 35-36, 38-39	10-12, 35-36, 38-39
	Sweater-dress: front & back	11-13, 35-36, 38-40	11-13, 35-36, 38-40	11-13, 35-36, 38-40	10-13, 35-36, 38-40	10-13, 35-36, 38-40	10-13, 35-36, 38-41	10-13, 35-36, 38-41	10-14, 35-36, 38-41	10-14, 35-36, 38-41	10-14, 35-36, 38-41	10-14, 35-36, 38-41	10-14, 35-36, 38-41	10-14, 35-36, 38-41	10-14, 35-36, 38-41
	Long sleeve	42, 57-58	42, 57-58	42, 51-52, 57-58	42, 51-52, 57-59	42, 51-53, 57-59	42, 51-53, 57-59	42, 51-53, 57-59	42, 51-53, 57-59	42, 51-53, 57-59	42, 51-53, 57-59	42, 51-53, 57-59	42, 51-53, 57-59	42, 51-53, 57-59	42, 51-53, 57-59
	Short sleeve	42, 45-46	42, 45-46	42, 45-46	42, 45-47	42, 45-47	42, 45-47	42, 45-47	42, 45-47	42, 45-47	42, 45-47	42, 45-47	42, 45-47	42, 45-47	42, 45-47
No colorblock	Croptop & sweater: front & back	16-17, 19-20	16-17, 19-20	16-17, 19-20	16-17, 19-20	15-20	15-20	15-20	15-20	15-20	15-20	15-20	15-20	15-20	15-20
	Dress with gathered skirt: front & back	4-5, 11-12	4-5, 11-12	3-5, 11-12	3-5, 10-12	3-5, 10-12	3-5, 10-12	3-5, 10-12	3-5, 10-12	3-5, 10-12	3-5, 10-12	3-5, 10-12	3-5, 10-12	3-5, 10-12	3-5, 10-12
	Sweater-dress: front & back	4-6, 11-13	4-6, 11-13	3-6, 11-13	3-6, 10-13	3-6, 10-13	3-6, 10-13	3-6, 10-13	3-7, 10-14	3-7, 10-14	3-7, 10-14	3-7, 10-14	3-7, 10-14	3-7, 10-14	3-7, 10-14
	Long sleeve	24-25, 31-32	24-25, 31-32	24-25, 31-32	24-26, 31-32	24-26, 31-32	24-26, 31-33	24-26, 31-33	24-26, 31-33	24-26, 31-33	24-26, 31-33	24-27, 31-33	24-27, 31-33	24-27, 31-34	24-27, 31-34
	Short sleeve	22-23, 30	22-23, 30	22-23, 29-30	22-23, 29-30	22-23, 29-30	22-23, 29-30	22-23, 29-30	22-23, 29-30	22-23, 29-30	22-23, 29-30	22-23, 29-30	22-23, 29-30	22-23, 29-30	22-23, 29-30
Skirt	Skirt piece dress with gathered skirt	48-49	48-49	48-49, 54-55	48-49, 54-55	48-49, 54-55	48-49, 54-55	48-49, 54-55	48-50, 54-56	48-50, 54-56	48-50, 54-56	48-50, 54-56	48-50, 54-56	48-50, 54-56	48-50, 54-56
Cuffs & bands	Neckband	1	1	1	1	1	1	1	1	1	1	1	1	1	1
	Sleeve cuffs	2	2	2	2	2	2	2	2	2	2	2	2	2	2
	Waistband	21	21	21	21	21+28	21+28	21+28	21+28	21+28	21+28	21+28	21+28	21+28	21+28
Extras	Pockets	8-9	8-9	8-9	8-9	8-9	8-9	8-9	8-9	8-9	8-9	8-9	8-9	8-9	8-9

How to tape pages together



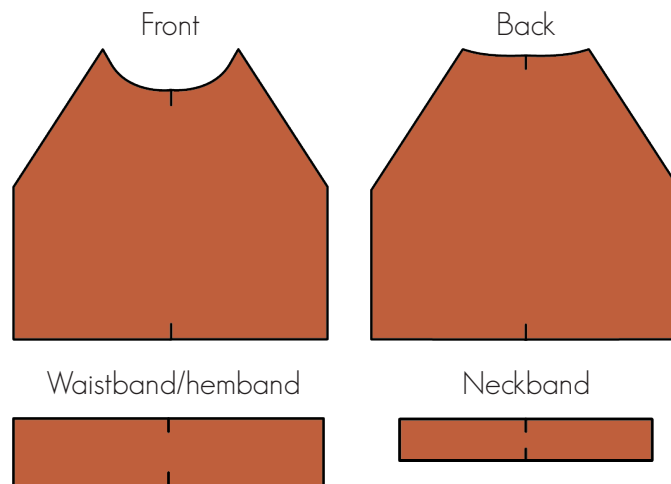
Required pattern pieces for each version

Type	Colorblock?	Sleeve	Pattern pieces
Croptop	Colorblock	Short sleeve	E1, E2, E3, G, O1, O2, O3.1, K1, M, N
		Long sleeve	E1, E2, E3, G, O1, O2, O3.2, K2, M, N
	No colorblock	Short sleeve	E, G, J1, K1, M, N
		Long sleeve	E, G, J2, K2, M, N
Sweater	Colorblock	Short sleeve	F1, F2, F3, H, O1, O2, O3.1, K1, M, N
		Long sleeve	F1, F2, F3, H, O1, O2, O3.2, K1, M, N
	No colorblock	Short sleeve	F, H, J1, K1, M, N
		Long sleeve	F, H, J2, K2, M, N
Dress with gathered skirt	Colorblock	Short sleeve	A1, A2, A3, I, O1, O2, O3.1, K1, M, L (optional)
		Long sleeve	A1, A2, A3, I, O1, O2, O3.2, K2, M, L (optional)
	No colorblock	Short sleeve	A, C, I, J1, K1, M, L (optional)
		Long sleeve	A, C, I, J2, K2, M, L (optional)
Sweaterdress	Colorblock	Short sleeve	B1, B2, B3, D, O1, O2, O3.1, K1, M, N
		Long sleeve	B1, B2, B3, D, O1, O2, O3.2, K2, M, N
	No colorblock	Short sleeve	B, D, J1, K1, M, N
		Long sleeve	B, D, J2, K2, M, N

Preparing your pattern pieces

Indicate the following center marks on your pattern pieces.

Do so by giving small clips within the seam allowance.

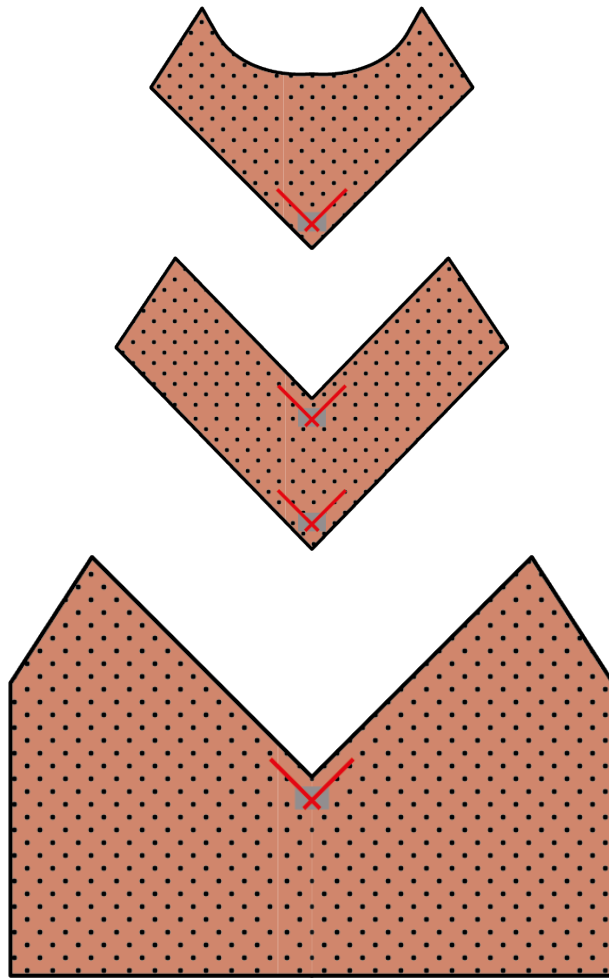


Do you want to add pockets to your gathered skirt?

Finish the seams marked in red with your overlocker or by using a zigzag stitch.



If you choose the colorblock option, indicate all the V's on your pieces.
Do so by drawing lines on the wrong side of the fabric, each 1cm from the edge.
The points where the lines cross will form the V in your colorblock.
For extra precision, reinforce the V with seam tape or with a small piece of fusible interfacing

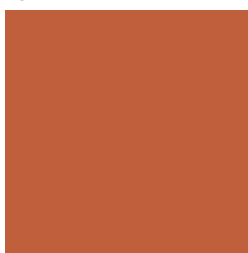


Instructions

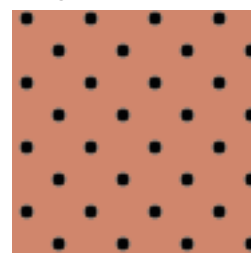
You can make your entire piece by using your overlocker.
If you want to add colorblocking, we recommend using your sewing machine for extra precision.

We mainly use pictures in this manual.
Some steps are clarified with digital drawings.
You can see the key for that below.

Right side of the fabric



Wrong side of the fabric



Not adding colorblocking to your sweater, top or dress?
Go to step 3 on page 14.
You can immediately start with attaching the sleeves ;-).

1. Colorblock option: assembling the front

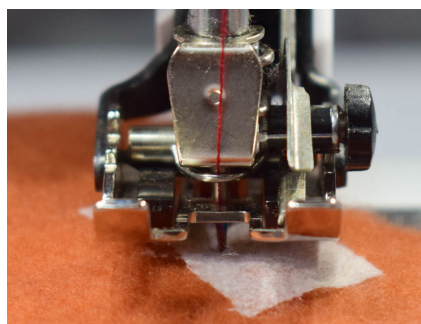
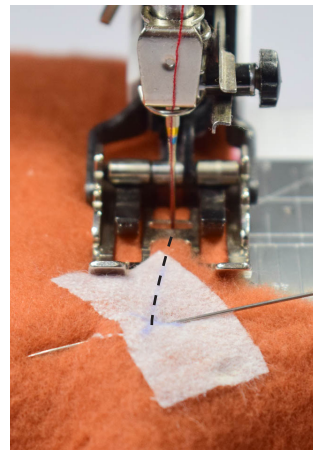
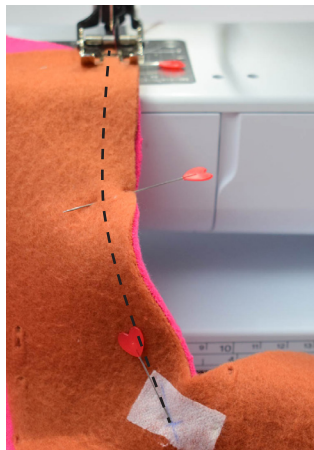


Put part 2 of the color block on top of part 1, right sides together and pin.

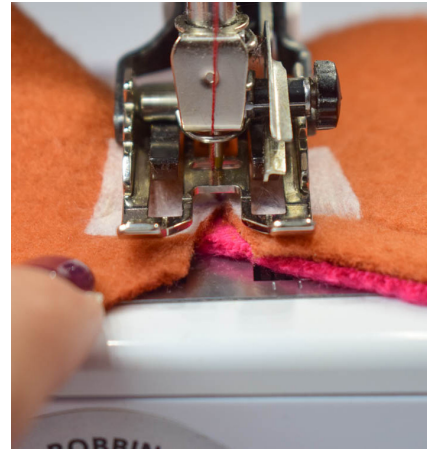
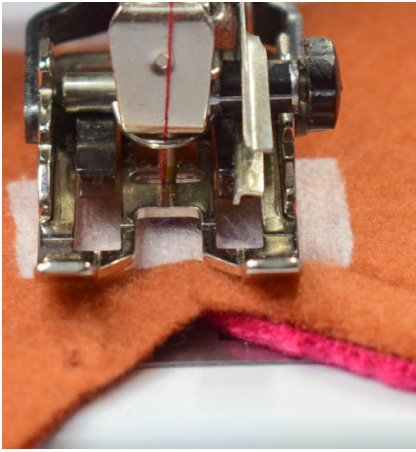
Make sure that the V marks are perfectly aligned. To do so, insert a pin through the mark on part 2, then through the mark on part 1 and secure the pin.



Stitch this seam until your needle is exactly in the indicated V mark. Leave your needle in the fabric and bring your presser foot up.



Turn the V towards you and clip into part 2 stopping right before your needle.



Turn your piece again, moving the V away from you.
Place the remaining part 2 on part 1, right sides together and stitch this seam.



Optional: finish this seam with your overlocker.
Press the seam downwards.



The first part of your colorblock is done, well done!

TIP:

If you're not yet satisfied with the V shape, clip the seam allowances a little further and press again.

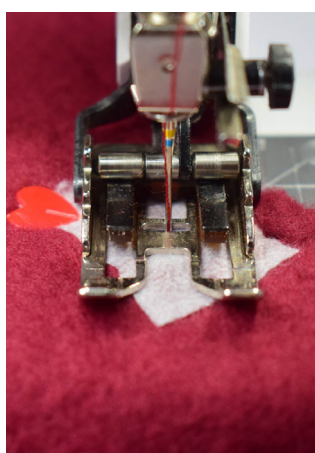
Put part 3 of the color block on top of part 2, right sides together and pin.



Make sure that the V marks are perfectly aligned. To do so, insert a pin through the mark on part 3 then through the mark on part 2 and secure the pin.



Stitch this seam until your needle is exactly in the indicated V mark. Leave your needle in the fabric and bring your presser foot up.



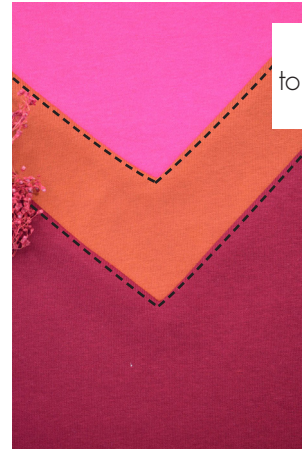
Turn the V towards you and clip into part 3 stopping right before your needle.



Turn your piece again, moving the V away from you. Place the remaining part 3 on part 2, right sides together and stitch this seam.



Optional: finish this seam with your overlocker.
Press the seam downwards.



Optional:
topstitch your V at 2mm
from the edge.

Your colorblocked front is finished, yay!

2. Colorblock option: assembling the sleeves

Colorblock part 1



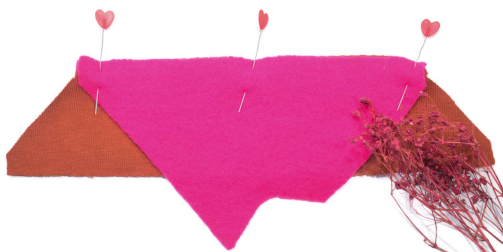
Colorblock part 2



Colorblock part 3



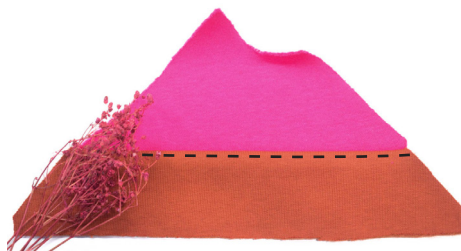
Put part 1 of the color block on top
of part 2, right sides together and
pin.



Stitch seam and finish with your
overlocker (optional).
Press seam downwards.



Optional:
topstitch your V at 2mm from the edge.



The first part of your colorblock is finished, one more to go ;-).

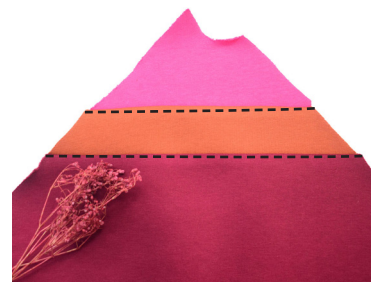
Put part 2 of the color block on top of part 3, right sides together and pin.



Stitch seam and finish with your overlocker (optional). Press seam downwards.



Optional: topstitch your V at 2mm from the edge.



Your colorblocked sleeve is finished!

3. Attaching sleeves to front bodice

The lower part is the front sleeve, this side will be attached to the front bodice.

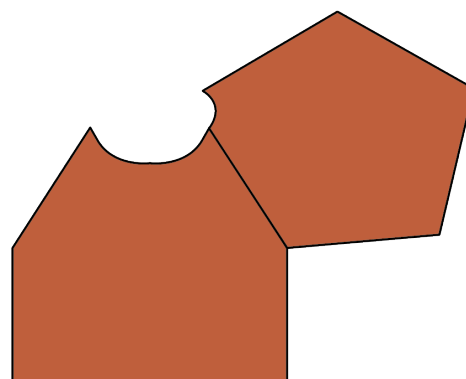
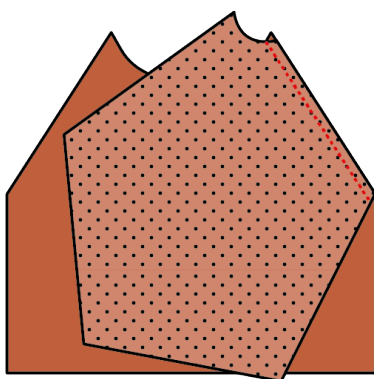
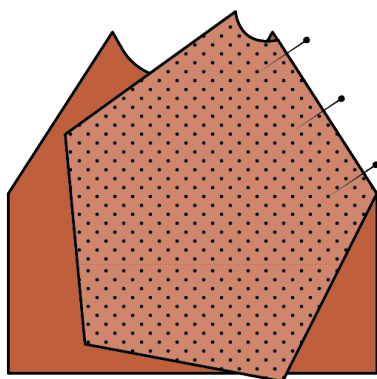
The higher part is the back sleeve, this side will be attached to the back bodice.



Put 1 sleeve on top of the front bodice, right sides together.

Pin and stitch seam.

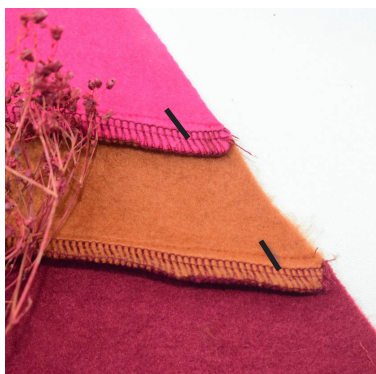
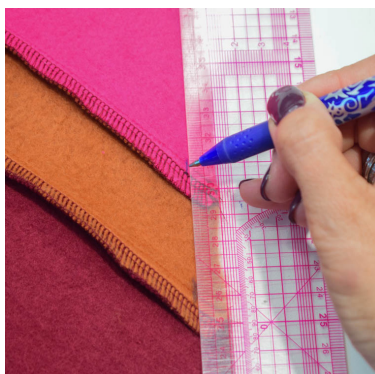
Press seam towards the sleeve.



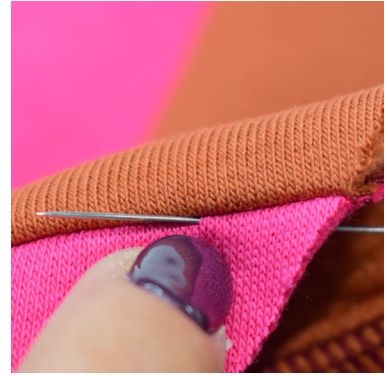
If you are working with the colorblocked front and colorblocked sleeve, then you need to make sure the colorblock of the front continues nicely into your sleeve.

First, mark your stitching line (1cm from the edge) at the stitched colorblock seams.

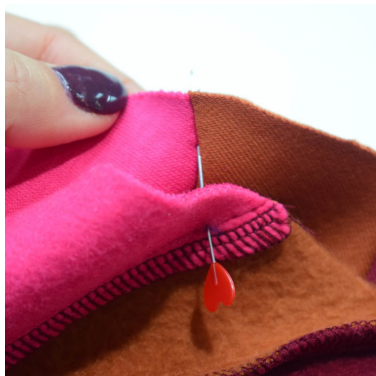
Do so on the wrong side of the fabric, both at the sleeves and the front bodice.



Put 1 sleeve on top of the front bodice, right sides together.
Insert a pin through the sleeve mark of your first colorblock seam.



Now insert the pin through the mark of the corresponding colorblock seam on the front bodice and secure.
Repeat for the second colorblock seam.



Stitch at 1cm leaving the pins inserted while going over the pinned colorblock seams.
Stitch slowly and precisely.
Finish seam with your overlocker (optional) and press seam towards sleeve.
Repeat for the other sleeve.



4. Attaching sleeves to back bodice

Put back bodice on one sleeve, right sides together.
Pin and stitch seam.



Finish seam with your overlocker (optional) and press seam towards sleeve.
Repeat for the other sleeve.



Your piece looks like this, with or
without colorblock :-)

5. Stitching side seams and sleeve seams

Put front and back bodice pieces right sides together.
Pin side seams and sleeve seams together.
Stitch seam in one go and press seam towards the back.
Repeat for the other side.



6. Neckband and sleeve cuffs

A) Neckband

Fold neckband in half, right sides facing.
Pin and stitch seam.
Press seam.



Fold and press in half again, wrong sides facing.
This way you'll get a tunnel.



Slide neckband over neckline of bodice and pin together.
Start by pinning center front and center back of neckband to
center front and center back of neckline.
The raw edges of the neckband align with the raw edge of
the neckline.



Gently pull your neckband and pin in
between center front and back.
Stitch all the way around and fold
neckband into place.
Press seam.



B) Sleeve cuffs

The pictures below show the sleeve cuffs of the long sleeve.
The steps for the short sleeve cuffs are identical.

Fold cuff in half, right sides facing and stitch seam.
Press seam.



Fold and press in half again, wrong sides facing.
This way you'll get a tunnel.

Slide sleeve cuff over sleeve of your sweater/dress.
Pin seam of sleeve cuff to seam of sleeve.
The raw edge of the cuff aligns with the raw edge of the sleeve.



Gently pull cuff while pinning all the way
around.
Stitch and fold into place + press seam.



Are you making the dress with gathered skirt? Go to step 8 on page 18.

7. Waistband/hemband

In the photos below, you can see the sweater version pictured.

The steps for the croptop and sweaterdress are identical.

Put both waistband pieces on top of each other, right sides facing.

Pin and stitch side seams.



Fold and press in half, wrong sides facing.
This way you'll get a tunnel.

Slide waistband over the bottom of your sweater.
Pin side seams, center front and center back of waistband to side seams, center front and center back of sweater.
The raw edge of the band aligns with raw edge of the sweater.



Gently pull your waistband while pinning into place.

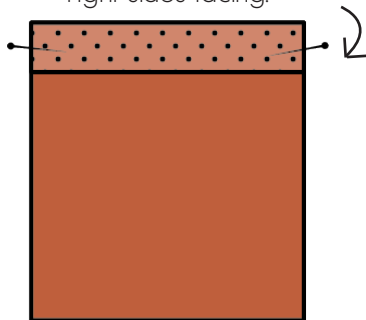
Stitch all the way around and fold into place.
Press.

8. Gathered skirt

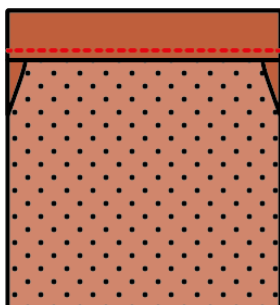
Are you adding pockets?

Let's do that first ;-).

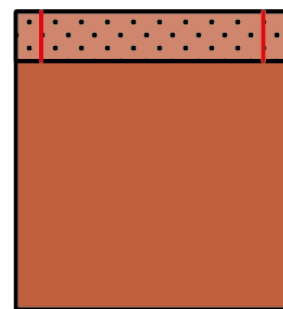
Fold over 1,5cm at the top of the pocket,
right sides facing.



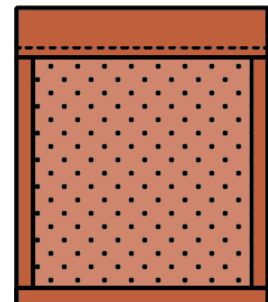
Fold back into place and push corners out.
Stitch into place at 2mm from the edge.



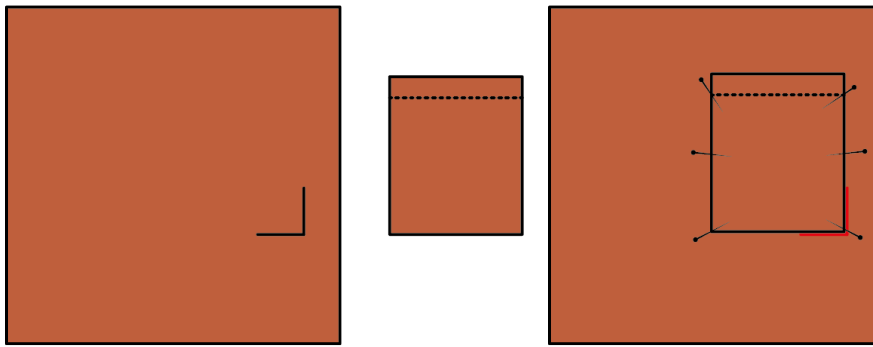
Stitch both sides of fold into place at 1cm
from the edge.



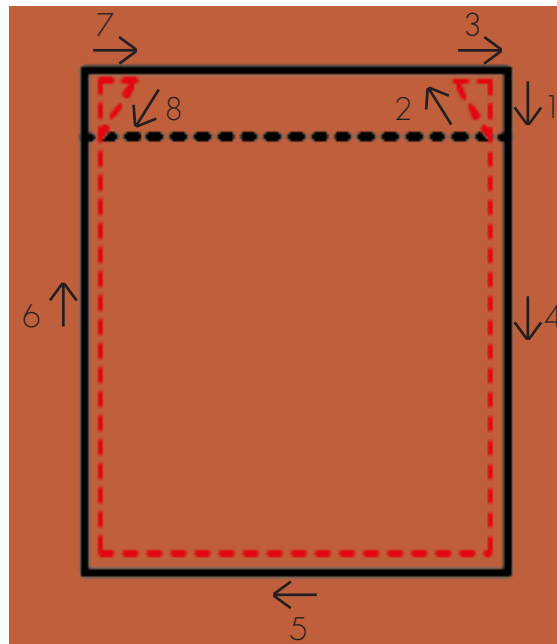
Press the pocket seam 1cm inwards,
all the way around.



Pin the pockets onto the front skirt piece, aligned with the pocket marks.



Stitch into place at 2mm from the edge with a little triangle in the corners.

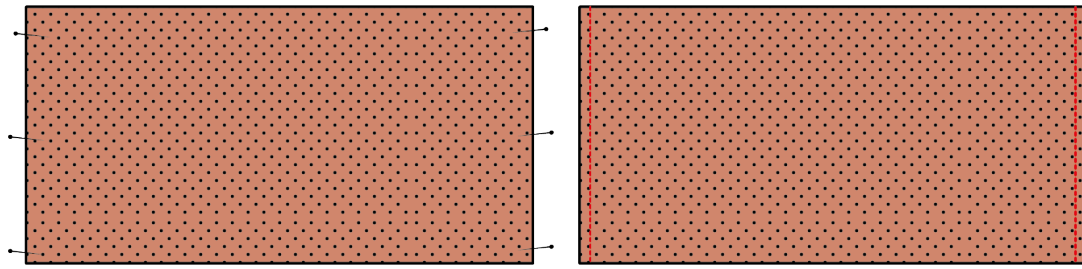


1. Start stitching at the top right stopping just above your previous stitching line.
2. Put your needle in the fabric and turn your piece so you can stitch diagonally towards the top edge of the pocket.
Stop at 2mm from the top edge.
3. Leave needle in the fabric, turn your piece and stitch back towards your starting point.
Your first triangle is finished.
4. Stitch along the right side of the pocket, finishing at 2mm from the bottom edge.
5. Put your needle in the fabric, turn and stitch bottom edge.
Stop at 2mm from the left edge.
6. Put your needle in the fabric, turn and stitch left edge.
Stop at 2mm from the top edge.
7. Put your needle in the fabric, turn and stitch towards the center of the pocket.
Stitch as many stitches as in step 3.
8. Put your needle in the fabric, turn and stitch diagonally.
Stitch as many stitches as in step 2.
Backstitch.
Your pocket is secured, well done!
Repeat for the other pocket.

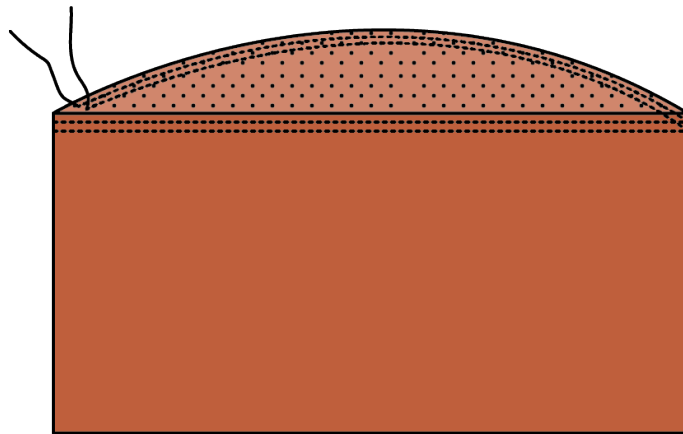
Put both skirt pieces on top of each other, right sides facing.

Pin and stitch side seams.

Press seams.

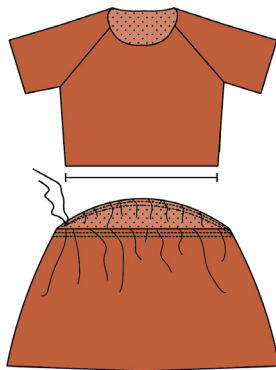


Stitch 2 gathering threads at the top of your skirt pieces, all the way around.
Stitch the first thread at presser foot width from the edge, the second at presser foot width from the first.



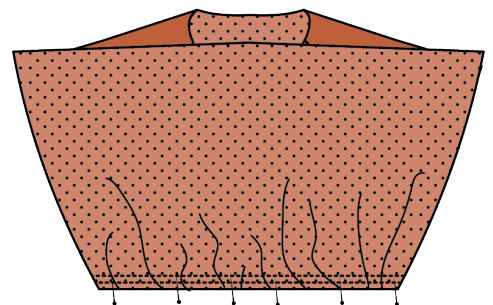
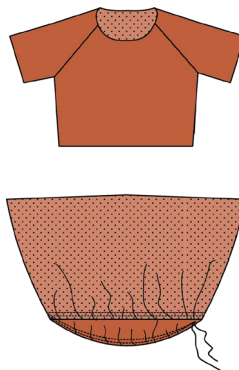
Gather your skirt pieces until they fit the bodice.

Gently pull the gathering threads and divide gathers evenly.



Turn your skirt inside out and slide over the bodice, right sides facing.

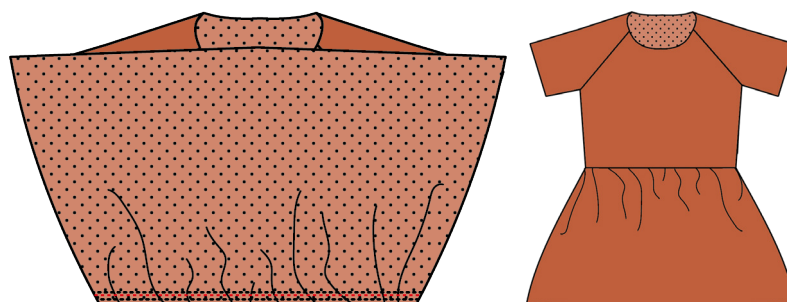
Pin into place, making sure the side seams and centers are aligned.



Stitch into place.

Remove the gathering threads.

Fold skirt into place and press seam.

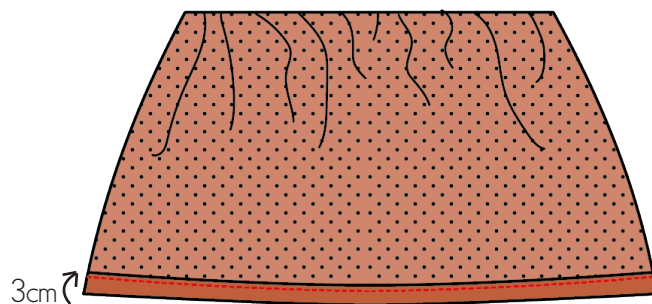


9. Hemming

Optionally you can finish the hemline of the skirt with your overlocker.

Press hem allowance 3cm inwards and stitch.

Press hem.



Press your dress again and you're finished!

Great job!

Share your creation!

Use hashtags #isasweater, #isadress en #isapattern making sure everyone can find and admire your Isa :-).



www.beletoile.com
www.instagram.com/_beletoile_
www.facebook.com/beletoileblog